



**Sonoma County**

Office of Education

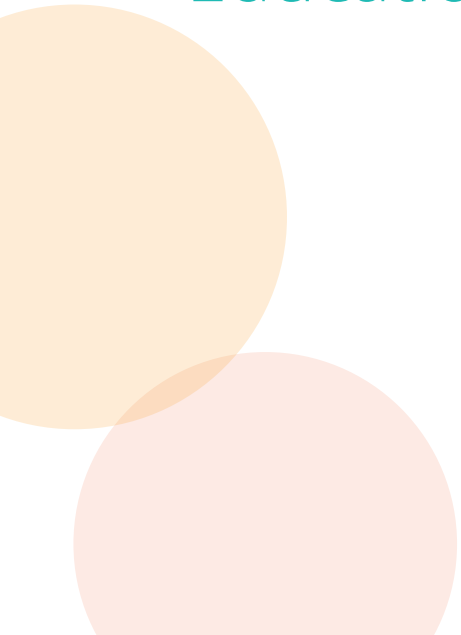
# Updated Health Guidance for Sonoma County Schools





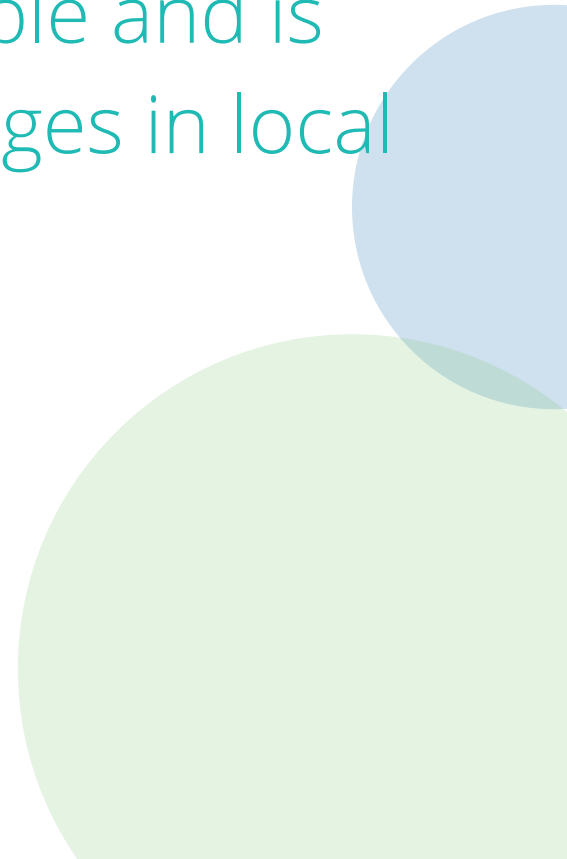
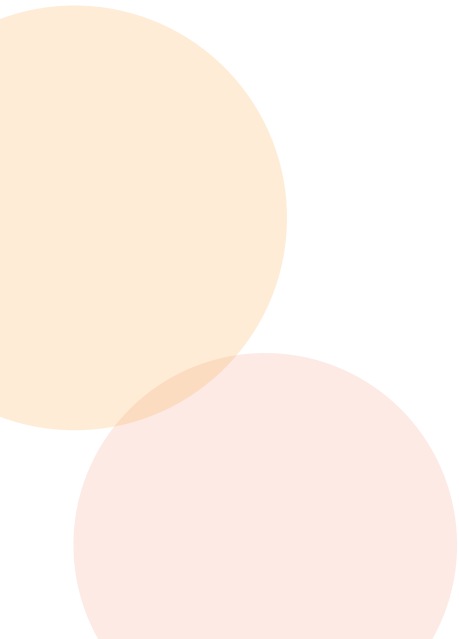
# Welcome

Presented by the Sonoma County Office of  
Education and Sonoma County Department of  
Health Services





Information presented here is based on the most recent information available and is subject to change based on changes in local conditions





# About These Changes

- **Local health order:** Requirement for all schools, public, private and charter, to follow. Supersedes state directive with more restrictive guidance
- **Strongly recommended guidance:** Indicates the best practice; however allows flexibility to allow for district to best meet its local variables and community values



# Staff Vaccination





# What's New

- County of Sonoma [health order](#) issued this week
  - Requires that school settings be in full compliance with state health order mandating vaccine verification/testing of unvaccinated workers **by Sept. 24**
  - Applies to public, private, charter, before-care/after-care on school sites
  - Applies to all workers, including unpaid workers such as volunteers
- Moves up the state deadline for compliance of Oct. 15 by several weeks
- LEAs encouraged to begin working on this immediately



# Masking





# What's New

- Masks now **strongly recommended** outdoors in most situations
- Consistent with guidance expected soon from Association of Bay Area Health Officers (ABAHO)
- Brief, socially distanced mask breaks acceptable
- Recommendation (rather than health order) allows for LEAs to implement based on local variables





# Surveillance Testing





# What's New

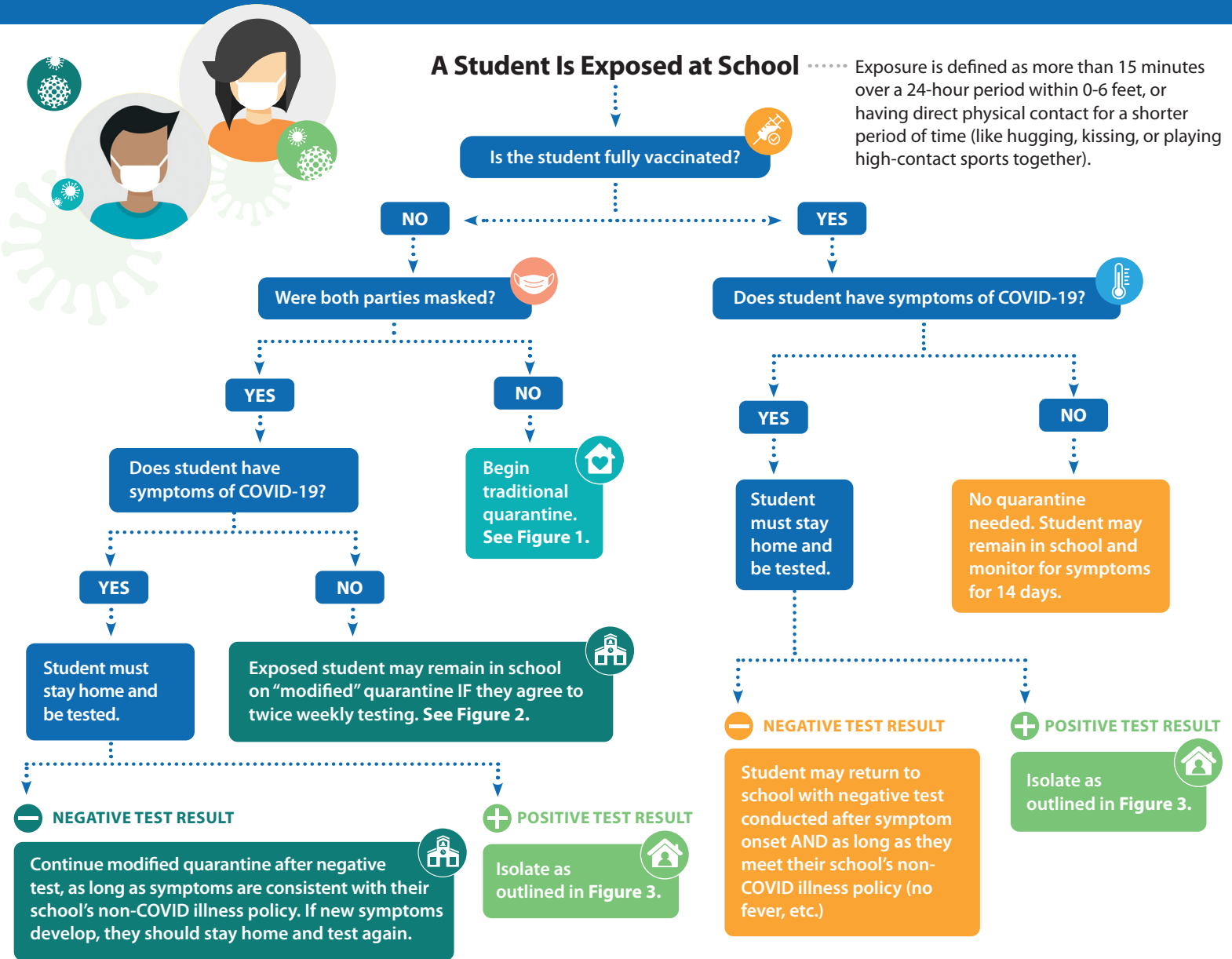
- We **STRONGLY RECOMMEND** that ALL schools offer **weekly surveillance testing** of students and unvaccinated staff
- This is the best practice, but if weekly testing is not possible, schools should test as frequently as is feasible given their resources
- PCR or Antigen accepted



# Consent

- SCLS Memo outlines when consent is needed.
- In short, consent can be provided by:
  - A student's parent (or other adult legally responsible for the student) for a student under the age of eighteen; or
  - A student who is at least thirteen years of age.
- [More details in the SCLS update](#)

# STUDENT QUARANTINE PROTOCOL FOR IN-SCHOOL EXPOSURE (TK-12)



**Figure 1**

**Traditional Quarantine \***

- Stay home 10 days after the day of most recent exposure
- If tested day 6 or later, may return to school after day 7 with negative results (full quarantine shortened by 3 days with testing)
- Continue monitoring for symptoms and wearing a mask in all public settings through day 14 after last exposure

**Figure 2**

**Modified Quarantine \***

- Continue to come to school IF mask is worn at all times AND student agrees to twice weekly testing for 10 days
- Without 2x weekly testing, student must complete traditional quarantine
- No extracurricular or community activities
- Quarantine ends after day 7 with negative test conducted day 6 or later with no symptoms
- Continue monitoring for symptoms and wearing a mask in all public settings through day 14 after last exposure

**Figure 3**

**Isolation Protocol \***

If positive for COVID-19, or symptomatic and declining to test, isolate at home until:

- At least 10 days since symptoms began OR at least 10 days since the date of the first positive COVID-19 PCR test if they have no symptoms
- Fever-free for at least 24 hours without the use of fever-reducing drugs
- Other symptoms have improved

\*If anyone develops symptoms, they should remain home and be tested. If they develop symptoms after a negative test was collected, they should stay home and get tested again. Anyone who develops symptoms should receive a negative PCR result and/or an alternate medical diagnosis, OR complete isolation (Figure 3) before returning.

The above flowchart applies only to TK-12 students. Regardless of masking, unvaccinated school staff who are exposed to COVID-19 at work should follow the quarantine guidance set by the most current Sonoma County Health Order. Vaccinated school staff do not need to stay home unless they develop symptoms or test positive.

# Back to School

## 2021-2022



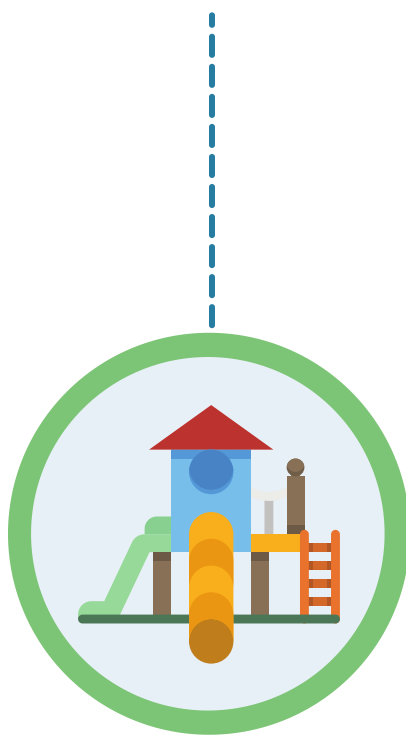
According to the California Department of Public Health (CDPH), recent evidence indicates that in-person instruction can occur safely without a minimum physical distancing requirement when other mitigation strategies are implemented.

As California schools plan for a complete return to in-person instruction for the 2021-22 school year, universal masking and other Covid-19 mitigation strategies will be prioritized.

### Masking in School Settings Regardless of Vaccination Status\*



**When Indoors**  
Masks are required  
for everyone



**When Outdoors**  
Masks are highly  
recommended



**On School Buses**  
Masks are required  
for everyone

\*Based on CDPH guidance released July 12, 2021, and County of Sonoma local recommendations. Guidance will be reassessed regularly.

[Click For Complete  
Guidance](#)

More information and resources  
can be found at [scoe.org/covid](https://scoe.org/covid)



**Sonoma County**  
Office of Education

**RESOLUTION 2021-0901 OF THE BOARD OF LIVE OAK CHARTER SCHOOL OF  
THE COUNTY OF SONOMA, STATE OF CALIFORNIA ON SUPPORTING THE  
EXECUTIVE DIRECTOR IN MAKING POLICY DECISIONS REGARDING  
MINIMIZING THE SPREAD OF COVID-19 ON THE SCHOOL CAMPUS**

WHEREAS the COVID-19 pandemic has severely impacted all public education institutions in Sonoma County including Live Oak Charter School

WHEREAS it is the goal of Live Oak Charter School to maintain in-person, on-campus instruction for all students with the fewest disruptions

WHEREAS it is the goal of Live Oak Charter School to minimize the spread of COVID-19 on the school campus and reduce disruptions to in-person learning due to COVID-19

WHEREAS the Sonoma County Department of Health Services provides regular guidance and recommendations to Live Oak Charter School around ways to minimize the spread of COVID-19 on campus

WHEREAS the Sonoma County Office of Education provides regular guidance and recommendations to Live Oak Charter School around ways to minimize the spread of COVID-19 on campus

WHEREAS the Executive Director of LOCS is responsible for receiving guidance and recommendations from the Sonoma County Department of Health Services and the Sonoma County Office of Education and creating policy in accordance to that guidance and recommendations

THEREFORE BE IT RESOLVED that the Board of Directors of Live Oak Charter School will support the the Executive Director in making policy decisions in accordance with the guidance and recommendations from the Sonoma County Department of Health Services and the Sonoma County Office Of Education

AND BE IT FURTHER RESOLVED that the Executive Director will report back to the community and Board at Regular Board meetings all policy decisions related to minimizing the spread of COVID-19 on campus and enabling students to have the fewest disruptions to in-person learning.

WHEREUPON, the President declared the above resolution adopted and SO ORDERED this date of September 1, 2021